

SpinClean™ PowerClean™ Gel Extraction kit

INTRODUCTION

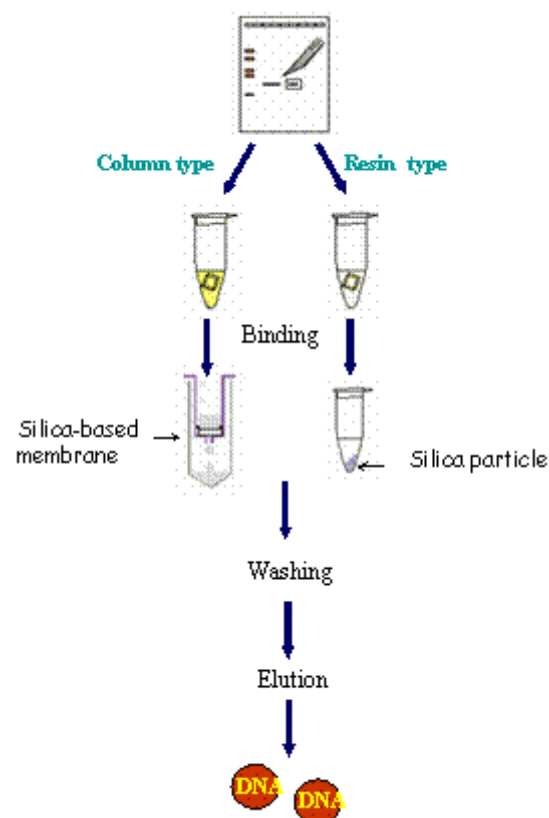
SpinClean™ Gel Extraction kits are designed for the purification of DNA from standard agarose gel (TAE/TBE). SpinClean™ Gel Extraction Kit (column type) uses spin column containing silica membrane to purify the DNA fragment. PowerClean™ Gel Extraction Kit (resin type) uses special buffer containing silica resin. The Gel Extraction buffer contains gel solublizer. This enables extraction of DNA fragments from both TAE and TBE buffer-containing agarose gels without additional solutions or modifications to the protocol. Fragments can be extracted from low-melting-point agarose .

FEATURES

- Silica-based membrane bound spin column
- Rapid and easy protocol
- 100 bp to 10 kb can be extracted from gels.
- The recovery of DNA is 70~80%.
- Sequencing Grade - Use restriction enzyme analysis, automated fluorescent sequencing analysis, etc.

Product Components

Catalog No	SpinClean™ Gel Extraction Kit		PowerClean™ Gel Extraction Kit
	13050(50)	13200 (200)	14200 (200)
SpinClean™ Column	50 ea	200 ea	200 ea
Collection Tube	50 ea	200 ea	200 ea
SpinClean™ Gel Extraction Buffer	-	-	100 ml¥²
SpinClean™ Gel Extraction Buffer	50 ml	100 ml¥²	-
Wash Solution	10 ml	20 ml¥²	20 ml¥²
Elution Buffer	10 ml	15 ml	11
Handbook	1	1	1



Figure

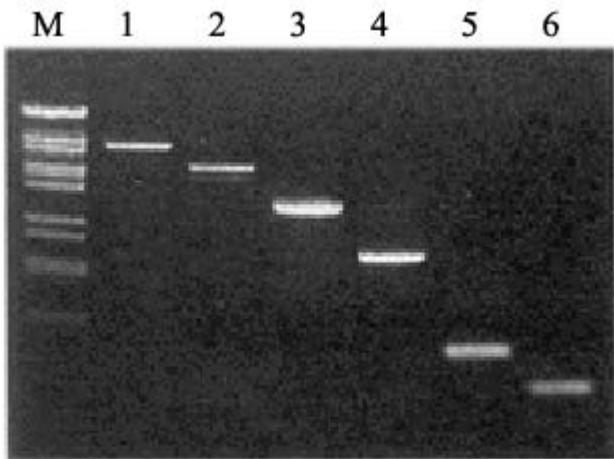


Figure 1.

Analysis of DNA fragment in the various size ranges purified by SpinClean™ Gel Extraction Kit.

M : DNA size marker,

1 : 7200 bp DNA fragment, 2 : 5600 bp DNA fragment

3 : 2900 bp DNA fragment, 4 : 1600 bp DNA fragment

5 : 469 bp DNA fragment, 6 : 200 bp DNA fragment

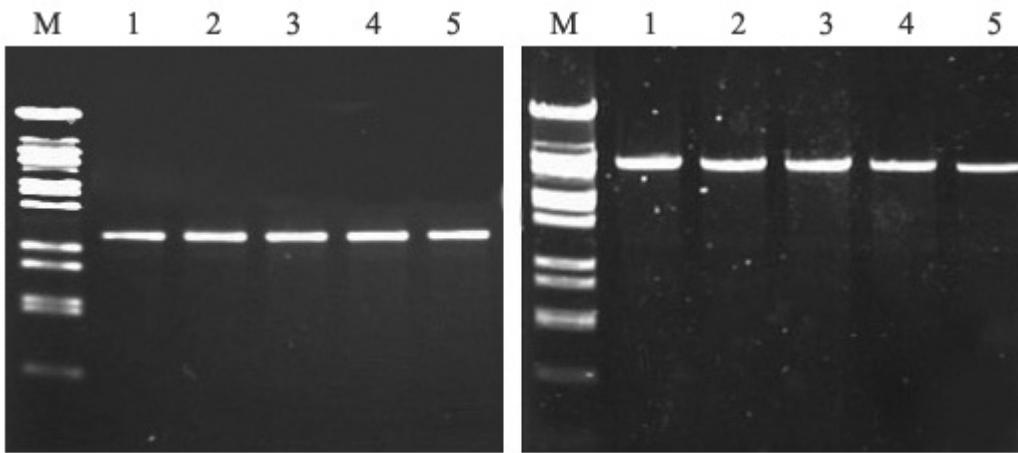


Figure 2.

Analysis of DNA fragment purified with Gel Extraction Kits

M : DNA size marker,

1, 2 : column type kit, 3 : SpinClean™ Gel Extraction Kit column type

4 : resin type kit, and 5 : PowerClean™ Gel Extraction Kit resin t

(A) 2,900 bp DNA fragment

(B) 7,200 bp DNA fragment